

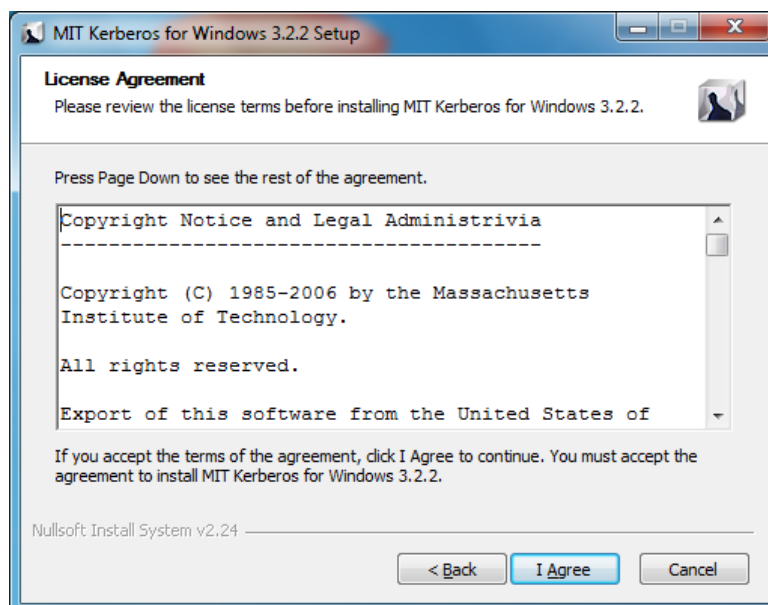


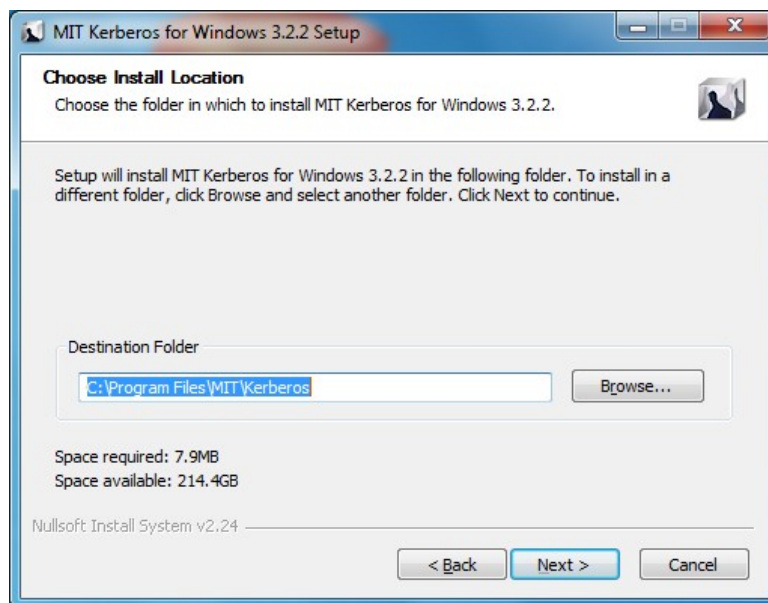
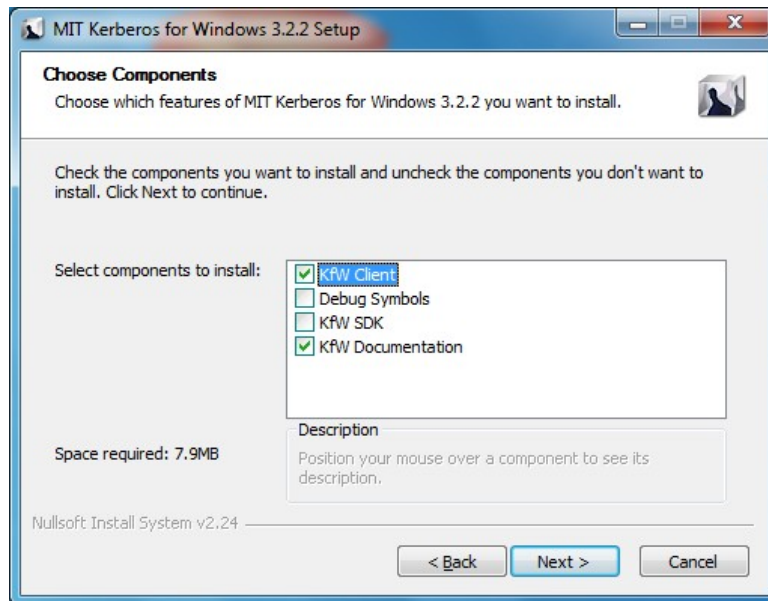
1. Download Kerberos Client

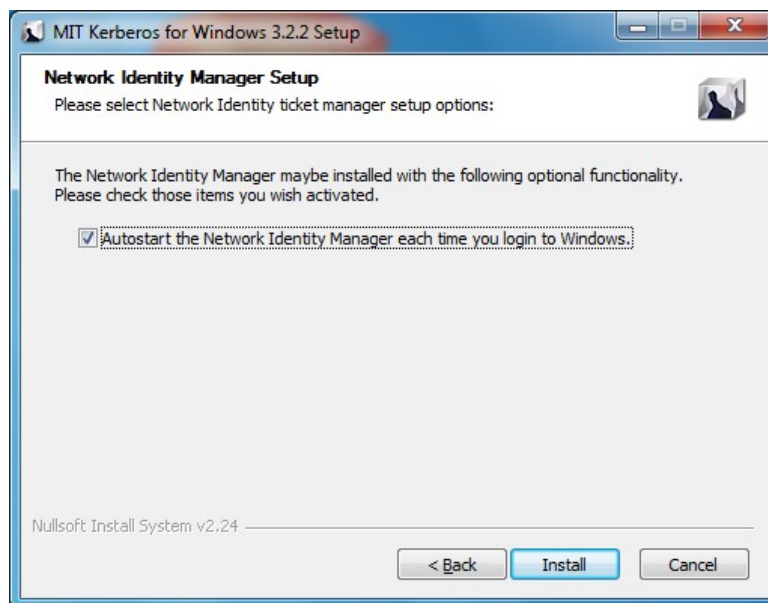
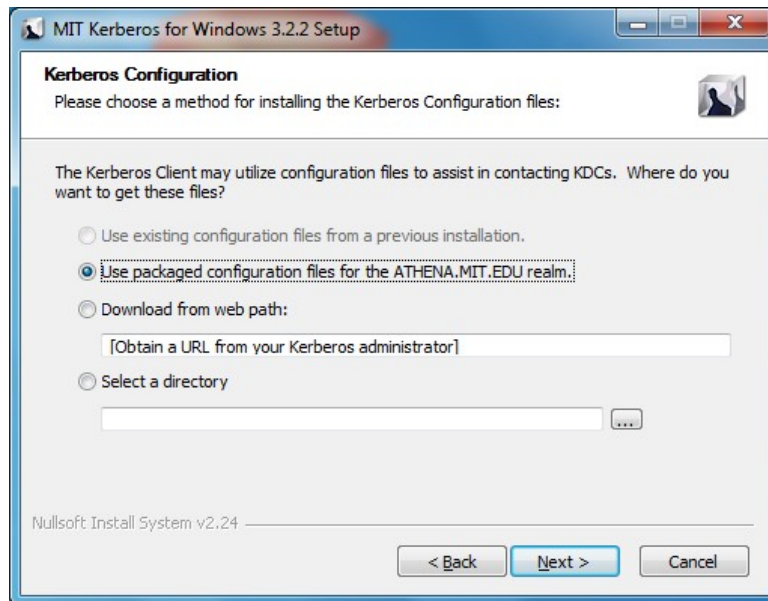
Download the latest "MIT Kerberos for Windows" Client from:

<http://web.mit.edu/kerberos/dist/index.html>

2. Install Kerberos Client

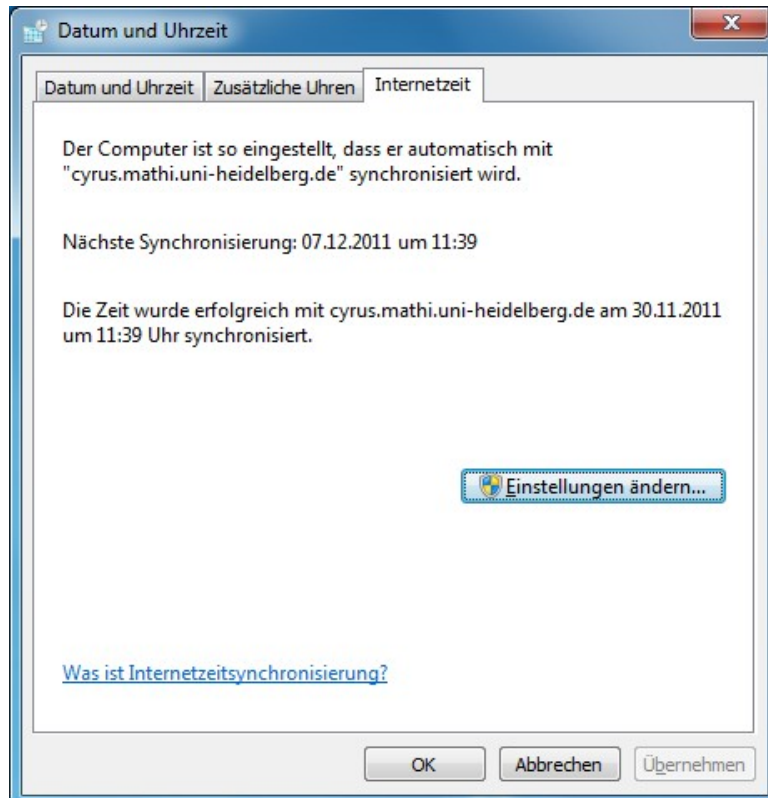


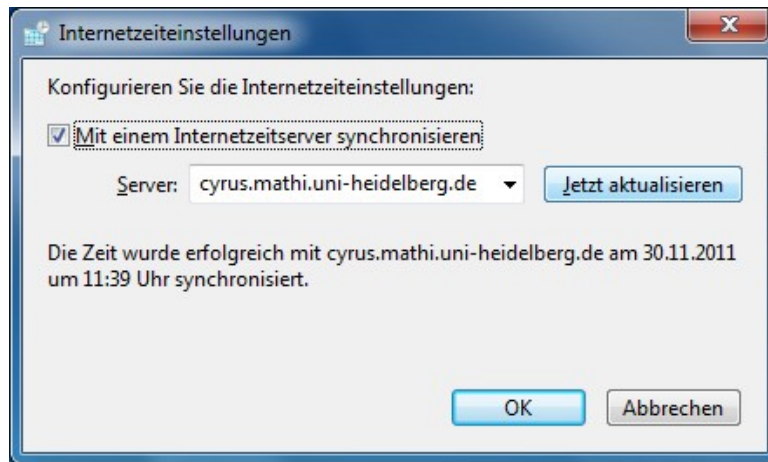




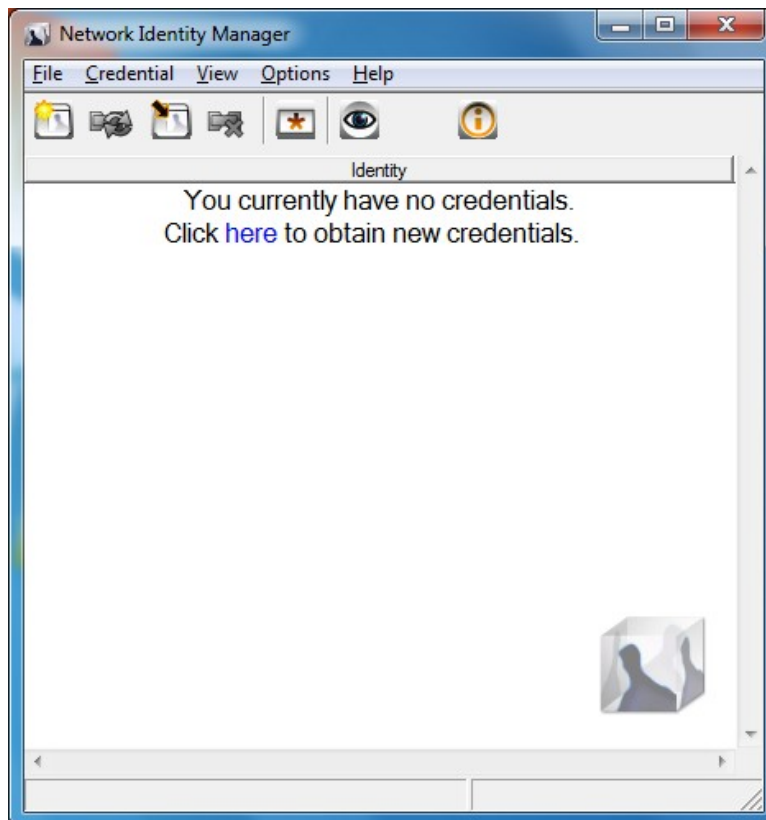


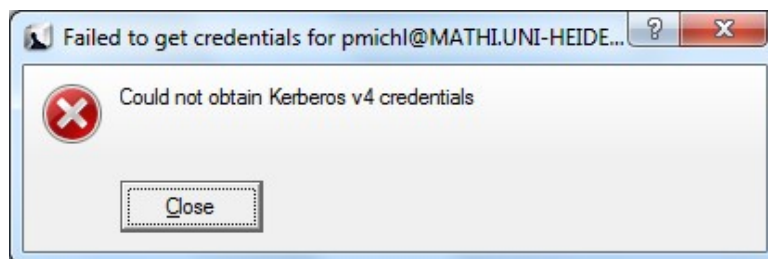
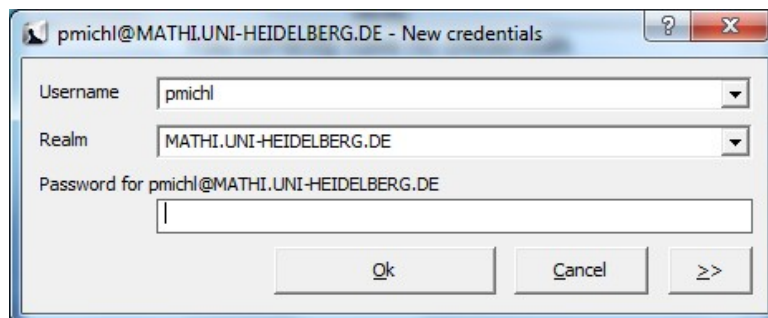
3. Setup Synchronization of the System Time



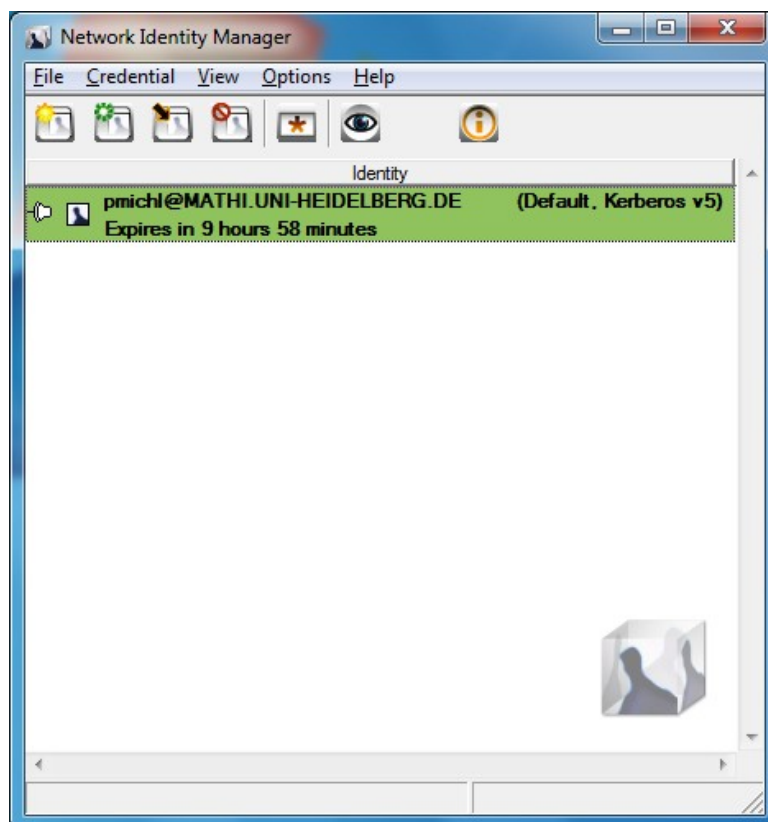


4. Try to obtain a Kerberos-”Credential”





This Error-Message informs us that we are not using the old Krb4



5. Final Settings for the Kerberos Client

